

LIVE

AUCTION

THURSDAY, APRIL 14, 2016 • 10 AM ET

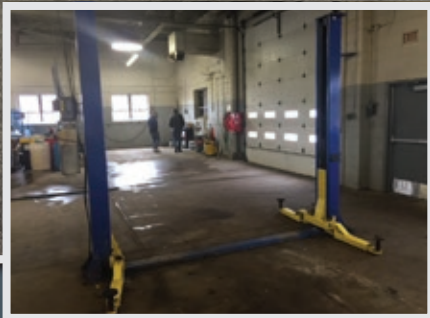
CARS2GO OF WAYLAND

1134 West Superior St., Wayland, MI 49348

Directions to Auction: US131 to Wayland Exit (135th Ave), Go East to auction location



Auctioneer's Note: Having decided to discontinue business, all of the shop tools, inventory, vehicles, UTVs, motorcycles, office furnishings, etc. listed will be sold at auction. Many of the auto repair items were purchased new in recent years and are in good condition. Outstanding opportunity!



**MIEDEMA
AUCTIONEERING
& APPRAISALS, INC.**

*"Leaders in
Innovative Auction
Marketing Methods"*

601 Gordon Industrial Court
Byron Center, MI 49315



1-800-527-8243

HEADQUARTERS - GR METRO
601 GORDON INDUSTRIAL CT.
BYRON CENTER, MI 49315
(616) 538-0367

NORTHERN MICHIGAN
210 NORTH GRACE ST.
MCBAIN, MI 49657
(888) 624-7653

OHIO OFFICE
9435 WATERSTONE BLVD. SUITE 140
CINCINNATI, OH 45249
(216) 732-9952

REPOCAST EASTERN MICHIGAN
2851 JAMES P. COLE BLVD.
FLINT, MI 48505
(248) 627-5200

FOR UPDATED INFORMATION & PHOTOS, VISIT WEBSITE AT: 1800LASTBID.com

LIVE

AUCTION

COMPLETE LIQUIDATION

CARS2GO OF WAYLAND



THURSDAY, APRIL 14, 2016 | 10 AM ET 1134 WEST SUPERIOR ST., WAYLAND, MI 49348



TRAILERS

- New 2016 Look Enclosed Element SE Trailer, 8.5' x 24', Car Hauler, White, VIN 53BLTEB19GA024441
- Demo 2015 Bluegrass Trail Enclosed Trailer, 6' x 12', Rear Ramp Door, 2 Door, Silver, VIN 57T1E1211FL003216
- 2011 Bluegrass Equipment Trailer, 6' x 20' deck, brand new 8,000 LB Super Winch with Stand- Alone Optima Battery and Remote, Ramps, Tandem Axle
- Load Trail Equipment Trailer, 6'3" x 20' deck, New Brakes and Wire Harness, Pintle Hitch, Tandem Axle, Ramps

- 2009 Harley Davidson XL 1200L Sportster, 10092 Miles, 1200cc Engine, VIN 1HD1CX3169K426249
- 2003 Yamaha V Star, 10848 Miles, 650cc Engine, Aftermarket Slip On Pipes, Windshield

SNOWMOBILES

- 2005 Ski Doo MXZ 600, 600 H.O.L. 2 Cylinder Engine, 3713 Miles, with Reverse
- 2002 Polaris Edge XC 700, 700 2 Cylinder Engine, 4037 Miles, Electric Start, Reverse

VEHICLES & SNOW PLOW

- 2005 Ford F150 XLT, Crew Cab, Short Box, 5.4L V8 Engine, Auto Trans, 153,069 Miles
- 2004 Jeep Grand Cherokee Limited, 4.7L V8 Engine, Auto Trans, 241,175 Miles, 4WD
- 2003 Chrysler Voyager Minivan, 3.3L V6 Engine, 158,439 Miles

UTV'S

- 2011 Polaris Ranger RZR 800, 1334 Miles, 800L 2- Cylinder Engine, VIN 4AVH76A2BD105715
- 2009 Polaris Ranger RZR 800, 1395 Miles, 800L 2- Cylinder Engine, VIN 4XAVH76A79D43935

MOTORCYCLES

- 2013 Harley Davidson Dyna Wide Glide FXDWG, 11024 Miles, 103cc Engine, VIN 1HD1GPM18DC306183

- 2002 Ford F250 Super Duty Pickup, 7.3L Diesel, 4x4, Auto Trans, Crew Cab, Short Box, 179904 miles, with Western Unimount Plow, Plow has new cutting edges; new: starter, battery, oil pan, front & rear brakes, windshield
- 2002 Jeep Grand Cherokee Laredo Sport, 4.7L V8 Engine, Auto Trans, 230,019 miles, 4WD
- Western Snow Plow, Ultramount, Steel Blade, 8' Pro
- Cycle County Plow, Approx. 48"
- Snowy Way Snow Plow

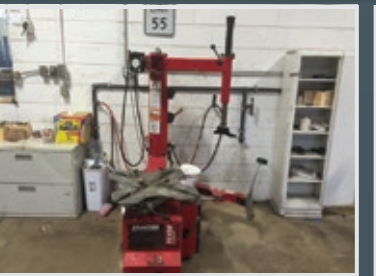
AUTO REPAIR/ SUPPORT EQUIPMENT

- (2) Bend Pak 4 Post 14,000LB Lifts
- (3) 2 Post Lift, 9000 LBS
- MacPherson Spring Compressor, Wall Mounted, Model MST-580A
- Air Transmission Jack, 1 Ton, Model ATD-7434
- 2015 Hunter Tire Changer, Model TCX50E
- 2015 Robinair A/C Machine
- Genisys Scan Tool
- Lincoln Air Compressor
- Thermax Extractor
- Hunter Alignment Machine

- Engine Stand
- Hose Reel, Water
- (3) Hose Reel, Air
- Gene Scissor Lift, Model GS1530
- Coats Tire Balancer
- OTC TPMS Tools
- Barteck TPMS Tool
- Honda Power Washer
- Clark Floor Scrubber
- Century 100 Mig Welder
- Bench Vise
- Radnor Torch Set
- Waste Oil Pump
- Bench Grinder
- (2) Oil Change Carts
- Ridgid Shop Vacuum
- Small Transmission Jack
- Jump Box
- Napa Slide Hammer Kit
- Napa Ball Joint Press Set
- Napa Northstar Water Pump Tool
- 20 Ton Press
- Napa Battery Charger
- Solar Battery Tester
- 3 Post Stand/ Screw Jack
- 2 Ton Floor Jack
- US General Engine Bridge, 1000 LBS
- Napa Torque Sticks

- Sawzall
- Branick Tire Spreader
- 4 Jack Stands
- Napa Fuel Injector Cleaner
- Pallet Jack
- (2) Hand Truck
- Tire Hand Truck
- OTC Ford Cam Sensor Synchronizer
- Gates Belt Installer/ Remover, Model NBH517
- A/C Calibration Weight
- Napa 41 MM Water Pump Wrench
- 1 1/16" Socket Deep
- Napa 17mm Allen Socket, Model NTH217
- Black Hawk 3/4 x 3/4 Socket
- Hanson 14mm x 1.5 Die
- 36mm Deep Socket
- K Tools 1/2 to 3/4 Adapter
- K Tools 3/4 to 1" Adapter
- Snap On 1 7/8" Socket, 3/4 Drive, Model M3586
- K Tools 1 13/16" 3/4" Socket
- 1 11/16 3/4" Socket
- Napa 17mm 1/2 Drive Socket
- 10mm Splined socket
- Napa M5 Splined Socket
- Honda 3.0L T- Belt Tool

- OTC Adapter for Pressure Gauge
- Double Flair Tool Kit
- Bubble Flair Tool Kit
- 2.2L Water Pump Tool
- Napa Balancer Puller Kit
- Napa Pitman Arm Puller, Model BK700-2458
- Napa Head gasket Tester, Model BK700-1006
- Napa Fuel Pressure Tester, Gas
- Napa Rear Seal Installer, 7.3L
- Mighty Vac Compression Tester, Diesel
- Spring Compressor, "Widow Maker"
- SPX Robinair Cool Tech 34700z A/C Machine
- Vehicle Accessories
- 3 complete sets of Chevrolet/ GM wheels, appears new as never mounted
- Tradesman Diesel Fuel Bed Tank
- Bed Extender for Pickup Bed
- Step Bars
- Westin Pull Bar
- Stinger/Bull Bar
- E-Trailer Hitch, new condition
- Curt Q24 Fifth Wheel Hitch, Brackets and Rails
- Curt Q5 Fifth Wheel Hitch
- K&W Diamond Plate Truck Bed Toolbox
- Diamond Plate Truck Bed Tool Box



See our website at www.1800LASTBID.com for more details. Call 1 800 LAST BID (527-8243) for a detailed bidders packet.



"Leaders in Innovative Auction Marketing Methods"

601 GORDON INDUSTRIAL CT.
BYRON CENTER, MI 49315



LIVE

AUCTION

PRSRRT STD MAIL
U.S. Postage
PAID
Byron Center, MI
Permit No. 19

DATED MATERIAL

APRIL						
S	M	T	W	T	F	S
					1	2
3	4	5	6	7	8	9
10	11	12	13	14	15	16
17	18	19	20	21	22	23
24	25	26	27	28	29	30

IF YOUR MAILING LABEL HAS AN EXPRESS NUMBER, PLEASE BRING THIS BROCHURE WITH YOU FOR EXPRESS CHECK-IN AT AUCTION

CARS2GO OF WAYLAND COMPLETE LIQUIDATION

LIVE AUCTION

**THURSDAY, APRIL 14, 2016
10 AM ET**

**1134 WEST SUPERIOR ST.
WAYLAND, MI**

EQUIPMENT TERMS

INSPECTION:

Wednesday, April 13 from 9am-4pm and auction day beginning at 8:00am

REMOVAL OF EQUIPMENT:

Auction day till 5pm, Friday, April 15. Larger items by appointment. Call Chuck Ranney (616) 560-0839.

SALES TAX:

No sales tax except titled items. Titled vehicles will be charged a 6% sales tax, unless you provide a copy of a valid dealer's license (NO EXCEPTIONS).

BUYERS OF TITLED VEHICLES:

State Regulations require that we broker all vehicles sold, therefore you must sign your paperwork in the auction office. A \$95 broker fee will be charged for paperwork. In addition, a \$15 title application fee will be collected for the State of Michigan (Dealers are exempt from the title application fee ONLY). Miedema Auctioneering will then process your titles. If you wish to plate your vehicle there will be an additional fee. Proof of insurance will need to be provided for removal.

TERMS:

All items sell "AS IS WHERE IS" with no warranty. There shall be no guarantees or warranties, expressed or implied, statutory or otherwise as to the merchantability or fitness for any particular purpose of any goods offered in this sale.

Buyer's Premium:

13%, 3% waived if paying with check or cash, making the Buyer's Premium 10%.

PAYMENT:

Complete payment auction day by cash, personal check, cashier's check, or credit card. Checks will be taken at the discretion of the auction company. Out of state checks must have a bank letter of guarantee. See guarantee form below. Personal or company checks MUST have a bank letter of credit GUARANTEEING payment to MIEDEMA AUCTIONEERING INC. for this auction and the amount of funds being guaranteed. See guarantee form below. All written material is subject to change.

Announcements made day of sale take precedence over printed material.

BANK GUARANTEE FORM (BANK LETTERHEAD)

DATE:

Our bank, (banks name), irrevocably will guarantee any checks written to MIEDEMA AUCTIONEERING INC. for the purchase of items at the CARS2GO Of Wayland Live Auction in Wayland, MI on April 14, 2016 by (you or your company name) from account number (fill in number) up to the total amount of \$_____. Sincerely, (Bank officer's name and title)

UPCOMING AUCTIONS

MICHIGAN: Spring Hudsonville – Construction & Farm Equipment – LIVE Consignment Auction

Saturday, March 26, 2016 | 10 am ET (local time)

5235 40th Ave., Hudsonville, MICHIGAN 49423

LIVE AUCTION: MICHIGAN Consignments Accepted!!

Spring Hudsonville Fairgrounds Auction.

RING 1 - Featuring Construction Equipment - Excavators, Loaders, Backhoes, Dozers, Skid Steers, Semi Trucks, Trailers, Attachments; Landscape Equipment - Riding Lawn Mowers, Snow Blowers, String Trimmers, Chain Saws; Miscellaneous Construction & Shop Tools, plus much more.

RING 2 - Featuring Farm Equipment – Tractors, 3 pt attachments, implements; Landscape Equipment - Riding Lawn Mowers, Snow Blowers, String Trimmers, Chain Saws; Miscellaneous Construction & Shop Tools, plus much more.

MICHIGAN: Concept Industries, Inc.

Tuesday, March 29, 2016 | 10 am ET (local time)

4950 Kraft Avenue SE, Grand Rapids, MICHIGAN 49512

LIVE & WEBCAST AUCTION: MICHIGAN.

Since 1984, Concept Industries has been a full service provider of Returnable Packaging Systems, Vacuum Formed Plastics and Non-Woven Fiber Products for the automotive, office furniture and other industries. Their expertise in fibers, blends, processing and manufacturing allows them to create superior natural and synthetic fibers to achieve specific acoustic and structural properties. Highlights to include: Cross Lapping/Needling/Vertical Lapping Lines, Thermoforming – Single Station & Three Station, Feed & Blending Lines, Lamination Lines, Die Cutting Presses, Inspection & Laboratory, Tool Room, Fabrication, Rolling Stock, Plant Facilities, and Much More!

MICHIGAN: John Dolegowski Farm Equipment Estate

Saturday, April 16, 2016 | 10 am ET (local time)

2168 23rd Street, Allegan, MICHIGAN 49010

LIVE AUCTION: MICHIGAN

Due to the accidental death of John Dolegowski, Miedema Auctioneering will be conducting a live auction for the family to settle the estate. John was a longtime farmer in the area and formerly worked at Marker Implement. Auction highlights include: John Deere 9600 combine, 930F grain head, 8 row corn head, newer Kongskilde rock picker, Tractors, Tillage equipment, Hay equipment, Crawler Dozer, Trucks, Planter, Grain Drills, Cattle Squeeze Gate, Shop Equipment plus much more. This will be an auction you don't want to miss.

MICHIGAN: Earl Benedict Farm Auction

Saturday, April 23, 2016 | 10 am ET (local time)

Saranac, MI

LIVE AUCTION: MICHIGAN

Farm Equipment Auction to include: JD 9500 Combine 2WD 3000hrs, JD 6 Row Corn Head, JD 216 Grain Head, Case 7240 Tractor MFWD Low Hours, Case 1570 Tractor, NH LS120 Rubber Tire Skid Steer, JD235 Disc, International Field Cultivator, JD 7000 6 Row Planter, NH 1260 Chopper, Kilbros Gravity Wagons, NH 276 Square Baler & more!